

# NEW MARSHFIELD EXCHANGE OF GTE NORTH

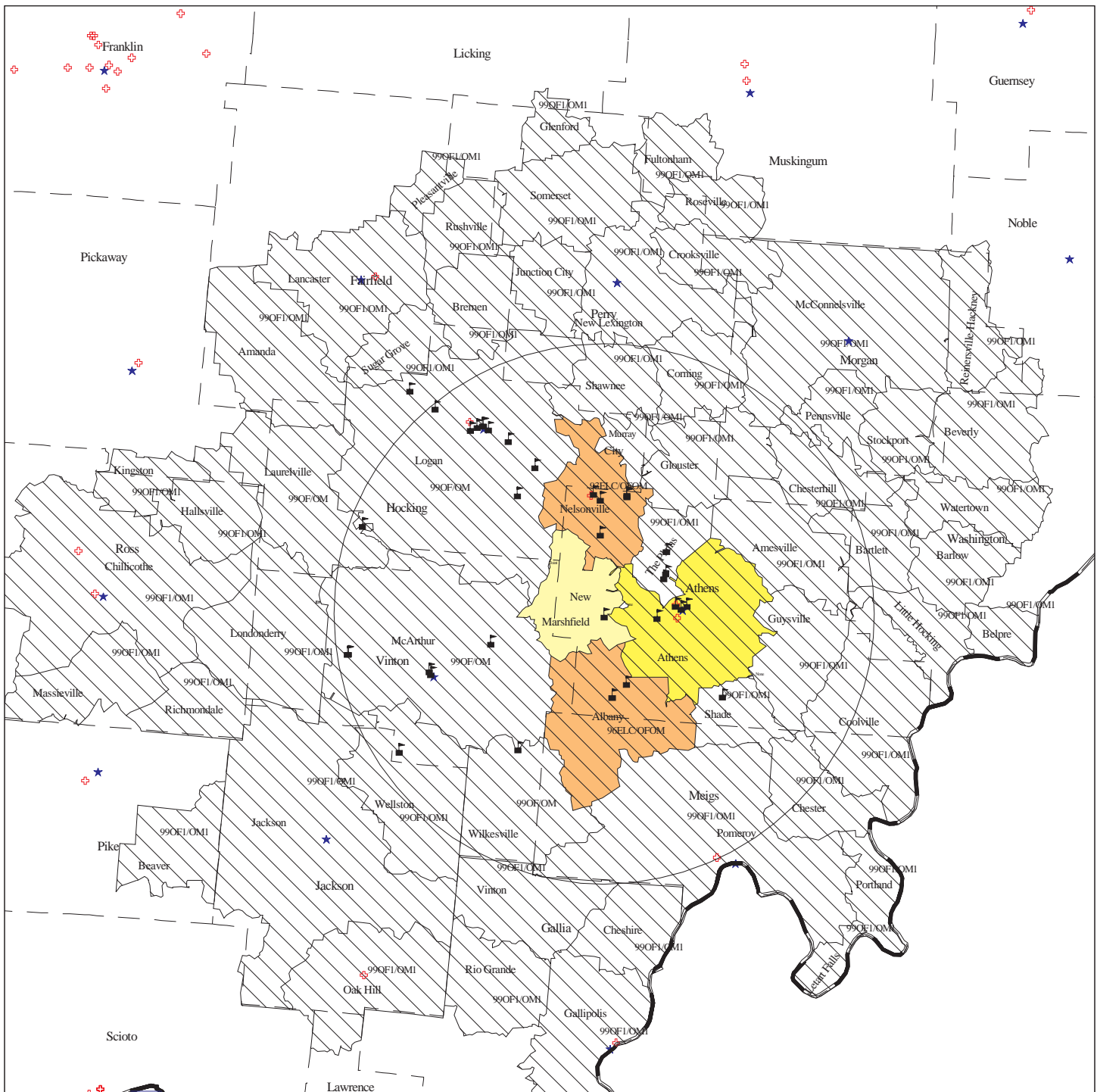


	Requesting exchange		Optional		Hospital
	Non-optional flat rate		EAS requested		County seat
	Measured rate EAS		County boundary		Public School
	Discounted toll		LATA boundary		

LATA-WIDE OPTIONAL CALLING PLANS THAT ARE CURRENTLY AVAILABLE IN THIS EXCHANGE ARE NOT DISPLAYED BELOW

Circle is 22 miles from NEW MARSHFIELD

SCALE: 1:750,000



COPYRIGHT

October 06, 2003

PUCO